

保固服务

Superlux舒伯乐针对在符合使用手册上所载明之使用方法，给予自购买日期起一年的所有材质及制造质量的保证期限。此保证期限将依据在不同国家或地区而有所调整。请联络当地的经销商以或得更多的信息。在有效期限内，若发现任何材质或生产质量，或是任何功能无法正常使用，Superlux将进行维修或更换零件。此保证条款只针对经由Superlux所授权的代理商或经销商所卖出的产品，然而以下的状况将不在保证条款内：

由于意外、错误的使用、不正当的使用、自行修改或维修，运送过程中造成的损害，不遵守说明书上所载明之使用方法、未经由Superlux所授权的公司执行维修的动作，由非授权的经销商所提出的要求，或任何Superlux产品其上的序号贴纸已经无法辨识或已经修改或被移除者。Superlux产品的维修只能由原厂所授权的维修中心或是授权的代理商或经销商为之。未经授权的维修、保养或修改将无法获取相关的保证，并且排除在保证条款之外。在保证条款下的维修保证，必须在提出当地授权代理商或经销商的销货收据下，才能获得保障。而且必须在提出购买日期才能决定你的Superlux产品是否在保证期限内。要获得原厂授权的维修保固，请联络业经授权的代理商、经销商或经由电邮support_cn@superlux.com.tw与我们联系。

本产品符合 FCC法规B类型第15章的规范。在满足以下两个条件才允许操作本产品：(1)本产品不会产生干扰，并且(2)本产品必须能够接受接收到的包括可能导致装置意外操作的任何干扰。适合使用的场所为家庭或办公室。

Superlux® 舒伯乐

中国地区行销和业务

021-69223756
shsales@superlux.com.tw
support_cn@superlux.com.tw

国际行销和业务

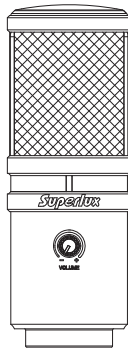
+886-2-26931323
sales@superlux.com.tw
support@superlux.com.tw



Made in china
P/N: LB10E205U0102 2016 JUL

Superlux®

E205U USB CONDENSER MICROPHONE



简体中文详见P.15

System Requirements

USB
USB 1.1 or 2.0, powered

RAM
64MB RAM (minimum)

Operating System

Microsoft Windows 7
Microsoft Windows 10
Microsoft Windows 2000 Professional Edition
Microsoft Windows XP Home/Professional Edition
(service pack 1.0 or later, or use the USB audio driver update from Microsoft)
Microsoft Windows Vista™ Business Edition
Apple Computer Mac OS X 10.0 or later Edition
Apple Computer Mac OS X 10.1 or later Edition
www.superlux.com.tw

SAFETY PRECAUTIONS

Safety symbols-“WARNING” AND “CAUTION”- and messages described below are used in this manual to prevent bodily injury and property damage which could result from mishandling. Before operating your product, read this manual first and understand the safety symbols and messages so you are thoroughly aware of the potential safety hazards.



WARNING: Indicates a potentially hazardous situation which, if mishandled, could result in death or serious personal injury.



CAUTION: Indicates a potentially hazardous situation which, if mishandled, could result in moderate or minor personal injury, and/or property damage.



WARNING

- Do not expose the unit to rain or an environment where it may be splashed by water or other liquids, as doing so may result in fire or electric shock.
- Do not attempt to modify this product. Doing so could result in personal injury and/or product failure.



CAUTION

- Do not subject to extreme force and do not pull on the cable or failures may result.
- Keep the device dry and avoid exposure to extreme temperatures and humidity.

GENERAL DESCRIPTION

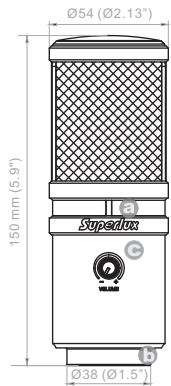
The E205U is a high quality condenser microphone with an advanced A/D and USB interface which gives you digital recording capabilities instantly with no external digital interface or software driver required. It is USB compatible with Mac, Windows, and most DAW software programs, including GarageBand. The E205U offers premium quality audio recording with ease and mobility, and with its pivoting stand mount and 9.8 ft. (3-meter) USB cable, the E205U is a valuable kit for any project studio.

FEATURES

- Smooth, flat frequency response
- Plug in and start recording, no drivers required
- Up to 16 bit / 48 kHz sampling
- Powered by USB power, no external power required
- Headphone output and volume control
- Includes pivoting stand mount, threaded adapter, and USB cable

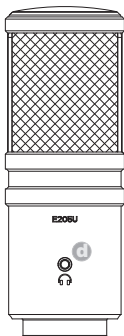
LAYOUT

- a USB indicator: When it is lit up, it means the USB connection is done and E205U get the power from USB interface.
- b USB connector: E205U involves a USB B-type connector, and it is allowed to connect to any device with USB interface.



Unit: mm/inch

- c Volume control: Pop-out level control to adjust the overall volume of the Headphone output.
- d Headphone out connector: 1/8-inch (3.5mm) stereo jack for connecting headphones or studio monitors.



MOUNTING

ON A TABLE

Through optional table stand HM6, You may put the E205U on a table and do recording.



ON A STAND

By using a microphone stand, the E205U can be mounted on it for recording.

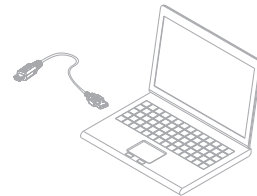


CONNECTIONS

USB Connector

A separated 3-meter cable with USB A-type connector allowed to be connected to a computer with USB port.

Note: Make sure to use a powered USB port.



QUICK START

1. You can position the E205U on an optional stand by using included accessories.
2. Be sure to position the side of grille net to the sound source and keep the Superlux logo and LED indicator face the direction of sound source.
3. Plug the B type connector of the included USB cable into the USB socket on the bottom of the E205U.
4. Now, plug the other end of the USB cable into an available powered USB port on your computer.
Note: Be sure to check the USB audio device driver setup for Windows and Mac OS to confirm your computer has recognized the E205U.
5. Next, launch your DAW, turn down the main output level and select the E205U for the input.
6. Set up a mono record track in your DAW.
7. Now, setup the level of the E205U and there are few ways to do this depending on your computer system. You can set the microphone's input level in the Sound playback in Windows or in the Sound dialog box in the System Preferences if you are using the MAC OS.
8. Set level of the microphone by raising the Input level control in your DAW or system to about half way up.
9. Next, put on your headphones that is connected to the headphone output of E205U, position the E205U to the sound source then adjust the volume control until you reach a comfortable listening level.

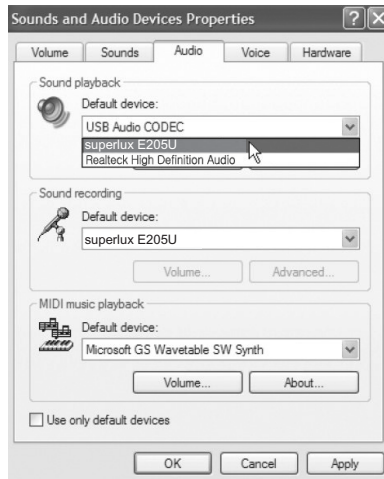
Now, follow the instructions of your DAW software to enable the track for recording and you're ready to record.

Note: if the microphone level of E205U are too loud or not enough, please check your DAW software or refer to Troubleshooting page in this manual to adjust the level in Windows and Mac computer system:

USB AUDIO DEVICE DRIVER

If you encounter problems, make sure the driver was properly installed.

Windows Operating Systems

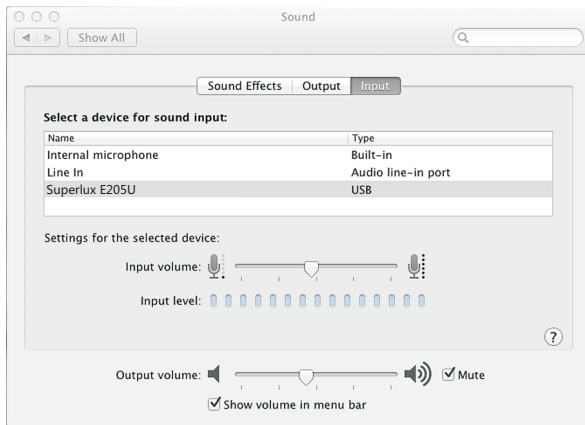


From the Control Panel, open Sounds and Audio Devices.

In the Audio tab, look for Superlux E205U in the drop-down menus for Sound playback and Sound recording.

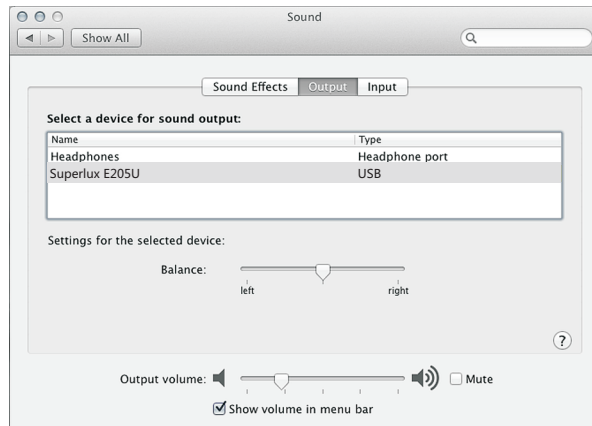
MACINTOSH OSX OPERATING SYSTEMS

Open the Sound Preference window from System Preferences.
Select Superlux E205U from both the Input and Output tabs.



8

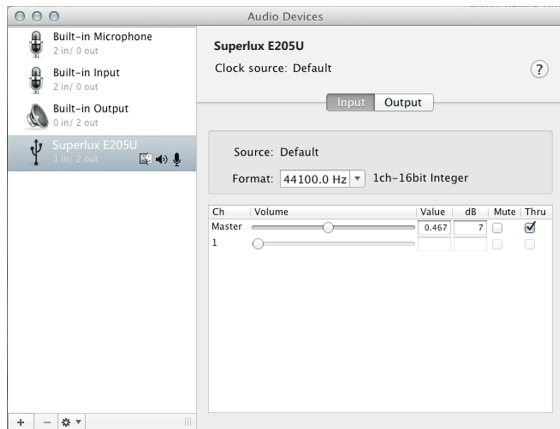
Note: Garage Band users:
open Garage Band before plugging in the microphone to automatically select the USB device.



9

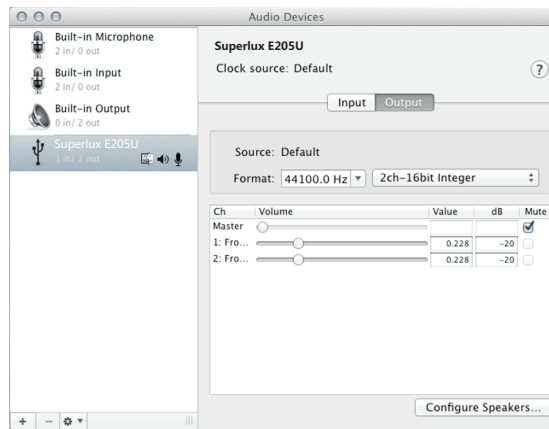
Using the Direct Monitor

1. To turn direct monitoring on or off, open the **Audio/MIDI Setup** utility located in the **Utility** folder inside the Applications folder.



10

2. Now click the checkbox in the **Thru** column in **Audio/MIDI Setup**.



11

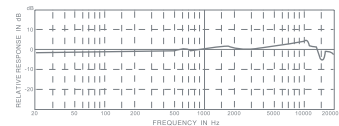
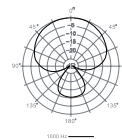
TROUBLESHOOTING

Problem	Solution
No sound in headphones	Check the headphone volume control and microphone gain at computer control panel
Microphone sound is too weak or distorted	Windows: From Control Panel, choose Sound and Audio Devices, select Audio tab, click Volume under Record and turn up Microphone Gain Control. Mac: From System Preferences, Choose Sound, Select Input tab and turn up Input gain
Headphones are not loud enough	Windows: From Control Panel, choose Sound and Audio Devices, select Audio tab, click Volume under Sound playback and turn up Volume Control. Mac: From System Preferences, Choose Sound, Select Output tab and turn up Output volume

SPECIFICATIONS

Type	Back Elected condenser
Polar Pattern	Supercardioid
Frequency Response	30-18,000 Hz
Sensitivity (at 1,000 Hz Open Circuit Voltage)	-38 dBV/Pa (12.6 mV)
Max. SPL	>135 dB SPL
Power Requirements	USB 5V, 30 mA
Resolution	Up to 16 bit/48k Hz sampling rate
Finish	Champagne silver
Connectors	USB B-TYPE, 1/8"(3.5mm) phone connector
Dimensions	Ø54 × 150 mm (Ø2.13" × 5.9")
Net Weight	422 g (14.9 oz)

Note: specifications are subject to change.



ACCESSORIES FURNISHED



YA2 threaded adapter

HM85 pivoting stand mount



Pouch

3-meter USB cable

OPTIONAL ITEMS

HM56 spider shockmount



LIMITED WARRANTY

Superlux Enterprise warrants all materials and workmanship under use as instructed by the user's manual of this product for a period of one year from the original date of purchase. Warranty period might be different by each area. Please contact your local dealer for more information. If any defects are found in the materials or workmanship or if the product fails to function properly during the applicable warranty period, Superlux Enterprise, at its option, will repair or replace the product. This warranty applies only to equipment sold and delivered by Superlux Enterprise's authorized distributors or dealers. However, the following are not covered:

Damage caused by accident, misuse, abuse, product modification or neglect; damage occurring during shipment; damage resulting from failure to follow instructions contained in your Instruction manual; damage resulting from the performance of repairs by someone not authorized by Superlux; claims based upon any misrepresentations by the seller; any Superlux product on which the serial number has been defaced, modified or removed.

Service and repairs of Superlux products are to be performed only at a factory-authorized facility or authorized distributors or dealers. Unauthorized service, repairs, or modification will void this warranty. To obtain repairs under warranty, you must have a copy of your sales receipt from the authorized Superlux dealer where you purchased the product. It is necessary to establish purchase date and determine whether your Superlux product is within the warranty period. To obtain factory authorized service, please contact authorized distributors, dealers or mail to support@superlux.com.tw.

THIS DEVICE COMPLIES WITH PART 15 OF THE FCC RULES CLASS B. OPERATION IS SUBJECT TO THE FOLLOWING TWO CONDITIONS: (1) THIS DEVICE MUST NOT CAUSE HARMFUL INTERFERENCE, AND (2) THIS DEVICE MUST ACCEPT ANY INTERFERENCE RECEIVED INCLUDING INTERFERENCE THAT MAY CAUSE UNDESIRE OPERATION. SUITABLE FOR HOME OR OFFICE USE.

Contact Us

Marketing and sales

Superlux, Taiwan
+886-2-26931323
sales@superlux.com.tw
support@superlux.com.tw

Manufacturing & logistics

Superlux Enterprise
Development(Shanghai)
Co., Ltd.



Superlux®

舒伯乐

E205U USB 电容麦克风

系统要求

USB

USB 1.1 或 2.0, 含5V供电

内存

64MB 内存 (最低要求)

操作系统

Microsoft Windows 7

Microsoft Windows 10

Microsoft Windows 2000 专业中文版

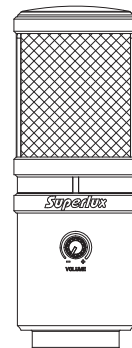
Microsoft Windows XP 家庭/专业中文版 (Service Pack 1.0 或以上版本, 或使用 Microsoft 的 USB 音频驱动更新)

Microsoft Windows Vista™ 企业中文版

Apple Computer Mac OS X 10.0 或以上中文版

Apple Computer Mac OS X 10.1 或以上中文版 (对于 Mac OS X 10.0 中文版, 不适用即插即用功能)

www.superlux.com.tw



安全事项

“警告”和“小心”的标志及以下的讯息，是用来提醒使用者避免不正确使用下，可能导致的伤害与后果。



警告：若未遵循相关的警告事项，当操作不当时，可能会导致严重的人身伤亡事故。



小心：若未遵循相关的小心事项，当操作不当时，可能会导致常见的人身伤害或财产损失。



警告

- 请勿曝露此产品在雨中或可能被水弄湿的环境中，可能会导致起火或触电事故。
- 请勿尝试修改本产品，可能会导致人身伤害和/或产品故障。



小心

- 不要用力过大，不要拉扯线缆，否则会导致故障。
- 应让本产品及一起应用的设备保持干燥，并避免暴露在很高的温度和湿度下。

概述

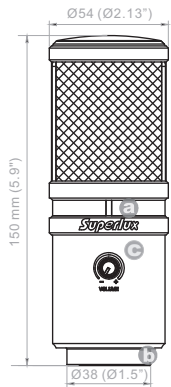
高质量电容麦克风，再加上USB接口，整合在一支麦克风上，让你立即实现数字录音。E205U兼容于Mac或Windows，及大部份的DAW数字录音工作站软件。E205U优越的录音质量，及其容易使用和便利的移动性，再加上麦克风夹、USB线，使E205U是任何录音室超值的選擇。

特征

- 平顺且平坦的频率响应
- 即插即用，不需要额外的设备，只需要一部计算机
- USB供电
- 含耳机输出接口及音量控制
- 分辨率16位/48k Hz
- 随附USB线、HM85旋转接头及转换螺母

功能说明

- a USB连接指示灯: 此灯亮表示, USB已正确连接, 且已由USB接口取得供电。
- b USB接口: USB B-TYPE 接口, 可连接至任何含USB接口之设备进行录音。
- c 音量控制: 按压弹出音量控制钮可调整耳机的音量。
- d 耳机输出: 3.5mm耳机输出接口, 可接至耳机或是有源监听音箱。



尺寸单位:毫米/英寸

安装

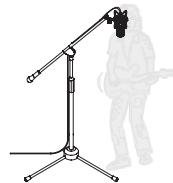
置于桌上

透过选购桌架HM6桌架, 可将E205U置于桌面使用。



置于立架上

可将E205U安装在麦克风立架上, 进行录音之用。

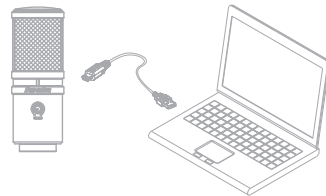


连接

USB 连接

随货附的1.5米USB线, 可连接在USB话筒及计算机之。USB mini B型接头接在USB话筒上, 而另一端A型接头连接于一般含电源的USB接口上。

注意: 计算机上的USB接口, 必须有5V的供电。



快速启用

- 1 透过随附的配件及选购的立架，可将E205U放在立架上使用。
- 2 将此侧向拾音麦克风有Superlux商标及指示灯的那一边面向音源，并将网头部份对准音源。
- 3 取随附的USB线，将USB B-型接头连接至E205U底端的USB接口。
- 4 将另一端的USB接头，接至计算机的USB接口。
注意: 请确认计算机上的操作系统(苹果MAC OS 或 Windows微软)已发出讯息窗口，通知已找到USB音频硬件。
- 5 下一步，请打开你的应用软件或是音乐录音软件。先将总输出音量关至静音，然后选择Superlux E205U为输入埠。
- 6 设立一个MONO单音的录音轨在录音软件上
- 7 设定使用E205U所需的音量。可在DAW录音软件中执行或是在Windows 微软的操作系统里，请到控制面板/声音/播放Sound playback中找到Superlux E205U; 若是苹果计算机，请到系统偏好设定/声音System Preferences/Sound dialog box，设定录音输入的音量大小。
- 8 先将录音输入的音量大小调至50%的位置。
- 9 可将耳机接入E205U之耳机输出接口，然后将E205U对着音源，适当的提升音量，至舒适的大小。如果有听到失真，就代表过载，请调低音量至没有失真为止。

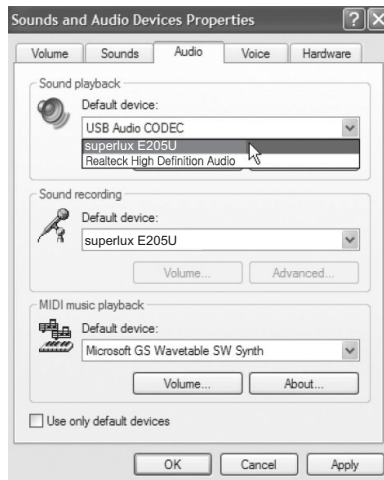
现在，依录音软件的操作方式，开始你的录音工作或是依其它网上对谈应用软件的指示，开始使用E205U。

注意: 如果麦克风的音量太大或不足，请检查你的录音软件或是参考在本使用手册"问题排除"的页面说明，进行问题排除。

USB 音频设备驱动

如果遇到问题，请检查并驱动程序是否已安装完成。

Windows操作系统



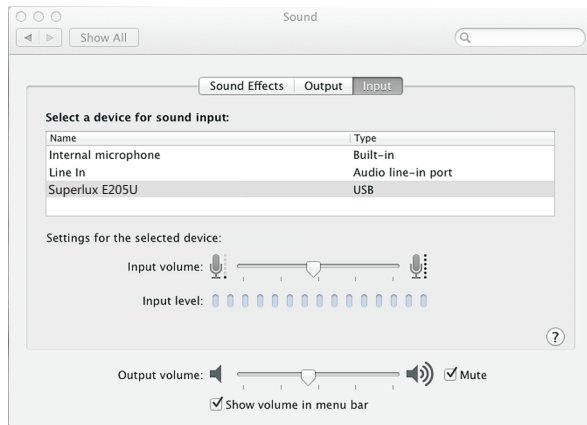
从控制面板，开启声音和音讯设备。

在“音频”卷标中，找出播放和录音下拉菜单中的Superlux E205U

Macintosh OSX 操作系统

从系统设置打开声音设置窗口。

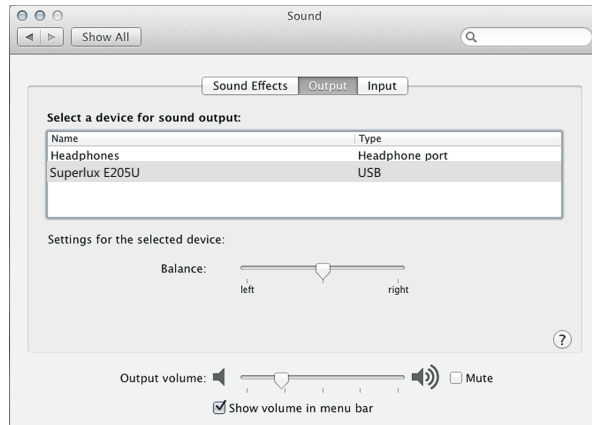
从输入和输出两个标签选择Superlux E205U。



22

注意：Garage Band 用户：

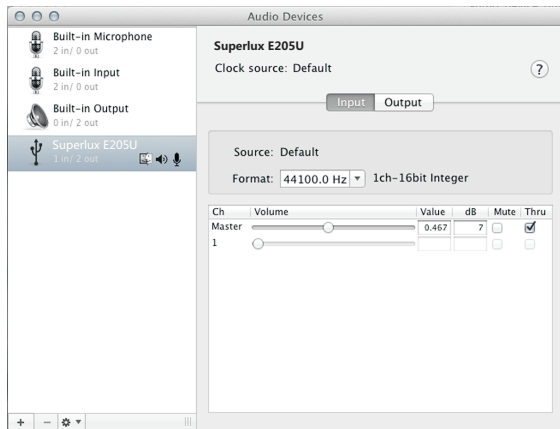
接通话筒前，先开启 Garage Band 以自动选择 USB 设备。



23

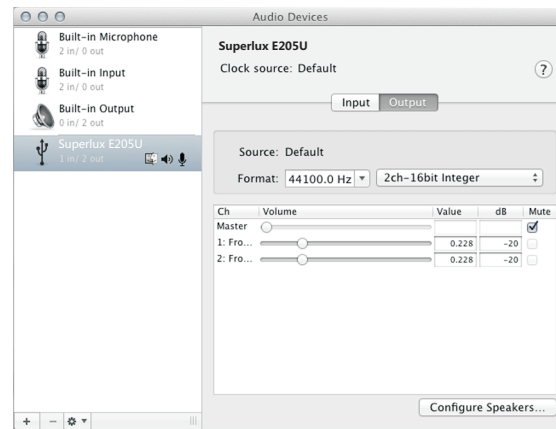
“直接监听的使用”—苹果计算机

1、请至功能Utility下的音频/MIDI Audio/MIDI Setup 页面，可开启或关闭“直接监听Direct Monitor”功能。



24

2、在选项中，勾选“Thru直达”。



25

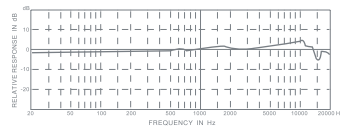
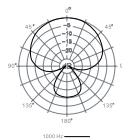
故障排除

问题	解决方案
耳机无输出	检查耳机音量及麦克风的音量控制。
麦克风音量太小	<p>微软操作系统Windows: 从控制面板Control Panel, 选择音讯设备Sound and Audio Devices, 选择音讯Audio tab, 在录音Record下点击音量, 然后调整麦克风的增益值gain。</p> <p>苹果计算机操作系统Mac: 从系统参考System Preferences, 选音讯Sound, 选输入Input tab, 然后调整输入增益值gain。</p>
耳机音量不足	<p>先调整耳机音量控制键, 若还是不够, 请依照以下指示进行。</p> <p>微软窗口操作系统Windows: 从控制面板Control Panel, 选择音讯设备Sound and Audio Devices, 选择音讯Audio tab, 在喇叭Sound Playback下点击音量, 然后调整耳机输出音量。</p> <p>苹果计算机操作系统Mac: 从系统偏好设定System Preferences, 选声音Sound, 选输出Output tab, 然后调整输出音量。</p>

规格

音头	电容背驻极
指向性	超心型
频率响应	30-18,000 Hz
灵敏度 (1 kHz, 开路电压)	-38 dBV/Pa (12.6mV)
最大音压	>135 dB SPL
电源需求	USB 5V, <30 mA
分辨率	最高达16位/48k Hz
表面涂装	香槟银
接头	USB B-Type及3.5耳机接口
尺寸	Ø54×150 mm (Ø2.13"×5.9")
净重	422 g (14.9 oz)

注意：技术规格可能有所更动



随货附件



YA2转换螺母



HM85
可旋转脚架转接件



拉链皮袋



3米USB线

选购附件

HM56避震架

